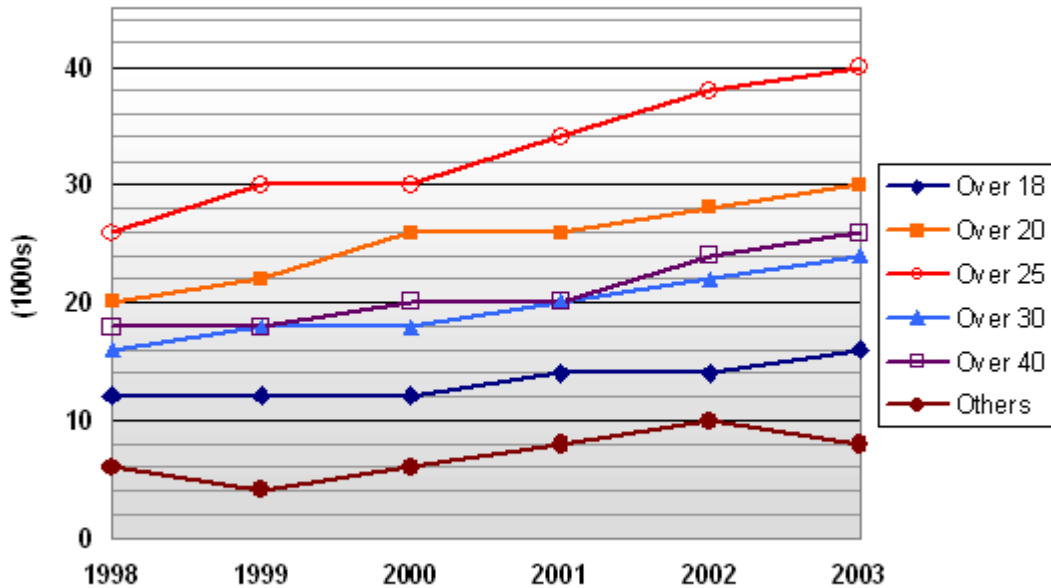




Numerical Reasoning Practice Test 3

Question Booklet

Pregnancies amongst women of different age groups



Q1 Of all pregnancies during 2001, what percentage was from women aged 30 and over?

12.8% 14.5% **32.8%** 42.6%

Q2 During which period did the number of pregnancies in the Over 40s increase the most?

2000 – 2001 **2001 – 2002** 2002 – 2003 2003 – 2004

Q3 The number of pregnancies for 25-30 year olds was projected to rise by 9% every year between 2001 and 2003. If this had been the case, approximately how many more pregnancies would have occurred in 2003 for the 25-30 age bracket?

690 **395** 1,114 1,160

City	2006 Data			1999 Data
	Population (thousands)	Number of 18-28 year olds (thousands)	Number of offenders	Number of offenders
A	129.2	20.4	380	396
B	118.0	16.9	392	380
C	72.4	7.3	273	214
D	25.1	6.3	166	176

Q4 Which city's population had the highest percentage of 18-28 year olds in 2006?

A B C D

Q5 Relative to population, which city had the lowest rate of offenders in 2006?

A B C D

Q6 Which city had the largest decrease in the number of offenders between 1999 and 2006?

A B C D

<i>Accounts Data</i>					
	<i>1999</i>	<i>2000</i>	<i>2001</i>	<i>2002</i>	<i>2003</i>
Total Revenue (£ million)	56.1	61.4	60.5	60.8	61.8
Overall Costs per Sale (£)	12.6	12.6	12.4	12.3	12.6
Number of Sales (thousands)	4,100	4,300	4,600	4,500	4,700
Cash Balance (£ million)	1.2	2.1	2.0	1.8	1.6

Q7 What was the overall profit as a percent of revenue for 2002?

4.28% 5.25% 6.51% 8.96%

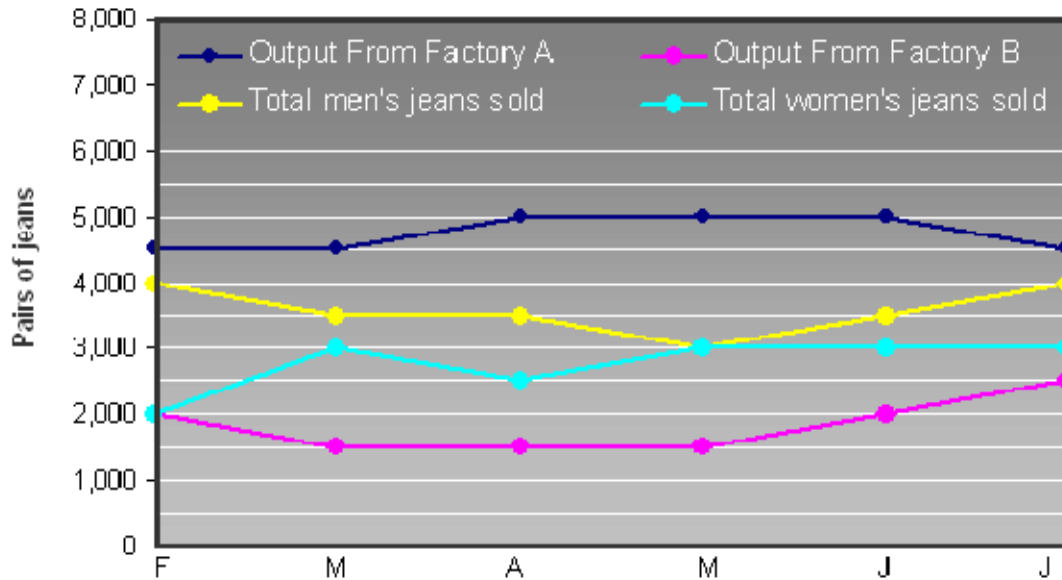
Q8 What was the Cash Balance as a percentage of total costs for 2001?

3.5% 3.6% 3.7% 3.8%

Q9 Which year saw the largest percentage increase in number of sales over the previous year?

2000 2001 2002 2003

Sales and Production for Jeans Manufacturer



Q10 For the two factories combined, what was the excess production of jeans in April that were not sold?

- 500 1,000 1,500 2,000

Q11 In which month was total production from both factories combined the lowest?

- March April May June

Q12 The jeans that are produced but not sold each month are stored for when sales exceed production. From the period February to July inclusive, what was the net number of jeans put into storage?

- 500 1,000 1,500 2,000

Q13 Of the jeans sales in June, what percentage were of men's jeans?

- 46.4% 52.7% 53.1% 53.8%

Qualifications held by employees of four different companies

Qualification	Company A	Company B	Company C	Company D
PhD	6%	1%	0%	1%
Masters Degree	23%	16%	12%	18%
Honors Degree	85%	78%	64%	61%
A Levels	99%	96%	95%	90%
GCSEs	100%	97%	98%	92%
Total number of employees	680	1,100	24,700	25,600

Q14 What proportion of employees in Company B hold either an Honors Degree or a Masters Degree?

16% 78% 94% Cannot say

Q15 How many more employees hold A-levels in Company C than in Company D?

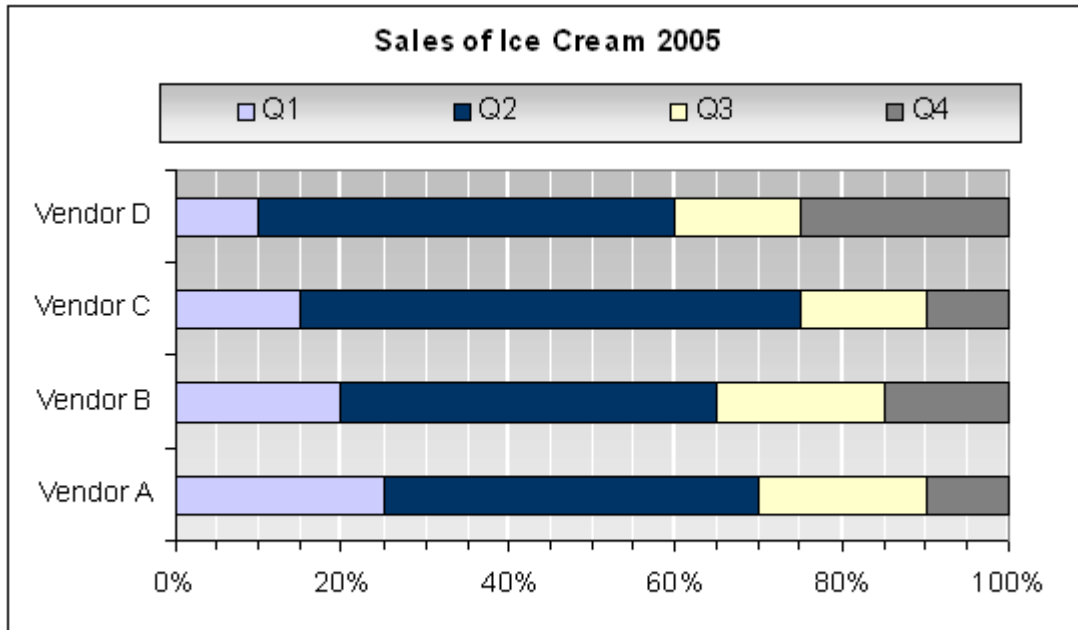
320 425 615 785

Q16 What company has the highest ratio of employees who hold Masters Degrees to employees who hold A-levels?

Company A Company B Company C Company D

Q17 For all four companies combined, what is the average percentage of employees who are Honor Degree qualified?

58.9% 63.1% 67.2% 72.4%



Q18 What was the percentage decrease in sales for Vendor C between the third and fourth quarter of 2005?

16.7% 25% 33.3% 36.7%

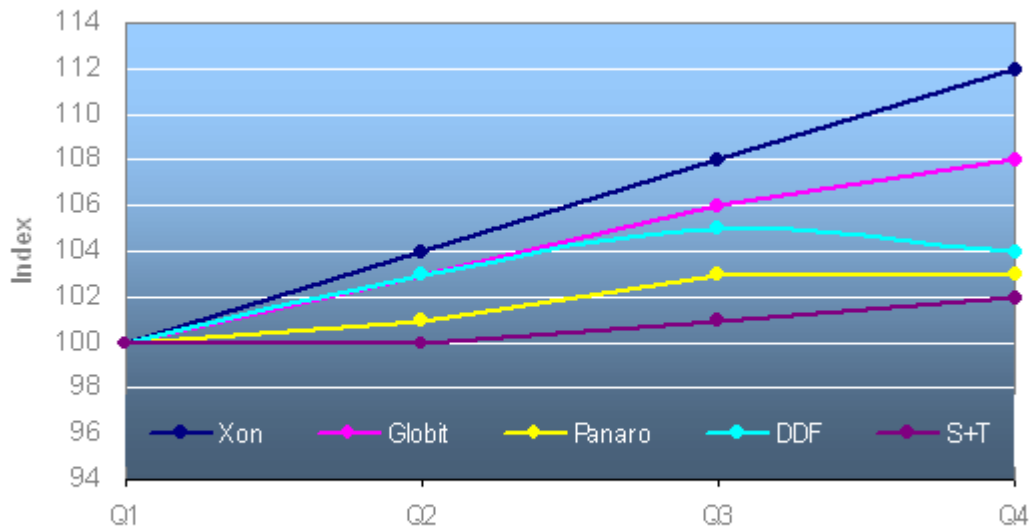
Q19 What was the ratio of Q4 sales to Q2 sales for Vendor B?

1:3 1:2 1:4 1:5

Q20 Which quarter consistently had the highest number of sales for all four vendors?

Q1 Q2 Q3 Q4

Electricity Price Indices



Q21 If the price of Panaro electricity was 12.14p in Q1, what would the price have been in Q4?

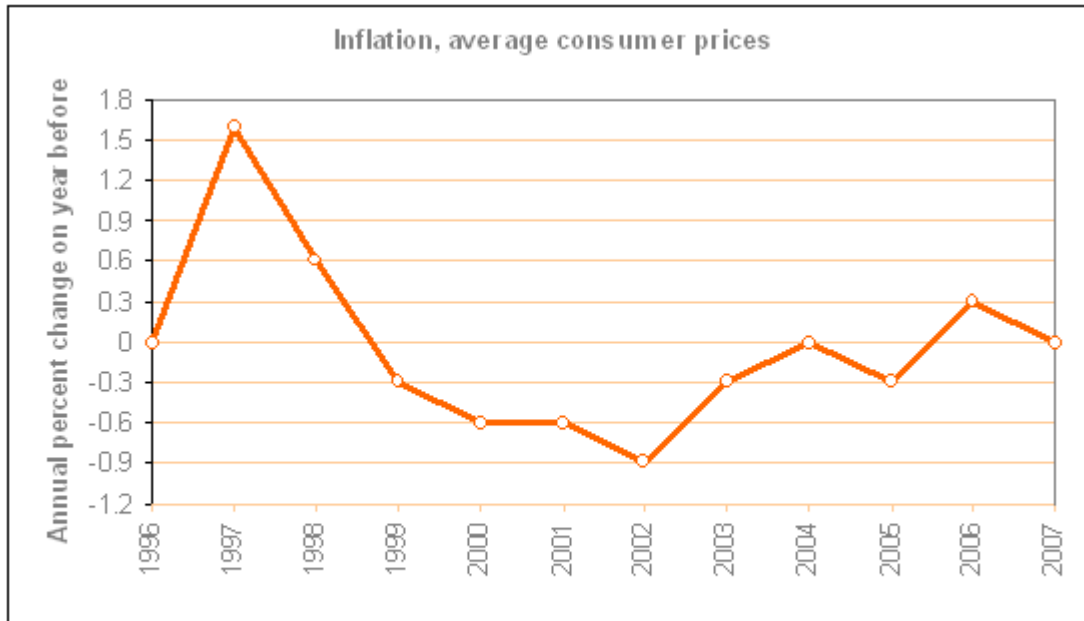
- 12.26p 12.38p 12.50p 12.61p

Q22 For the combined average of the five utility companies, which quarter experienced the largest increase in electricity price?

- Q2 Q3 Q4 Cannot say

Q23 In the third quarter, the price of DDF electricity was 13.13p, and the price of S+T electricity was 11.98p. How much cheaper than DDF was S+T in the fourth quarter?

- 0.68p 0.77p 0.92p 1.68p



Q24 If in 1998 inflation was 2.6%, what was it in 2003?

- 2.53% 2.56% 2.58% 2.62%

Q25 Between 1997 and 2007, how many times did inflation not vary from the previous year?

- 1 2 3 Cannot say

Q26 Between 1999 and 2007, what year experienced the largest proportional increase in inflation?

- 2003 2004 2005 2006

	2004	2005
Income		
Turnover	24,500	26,050
Cost of Sales		
Materials	8,260	8,860
Consumables	1,400	1,760
Total cost of sales	9,660	10,620
GROSS PROFIT	14,840	15,430
Operating Costs		
Salaries	8,905	
Marketing	260	240
Insurance	190	200
Professional fees	180	180
Rent	4,665	4,668
Total operating costs	14,200	14,538
NET PROFIT BEFORE TAX	640	892

Q27 What were Total Operating Costs as a percentage of Turnover in 2004?

49.8% 52.5% 58.0% 61.3%

Q28 If the cost of Consumables rose by 21% between 2005 and 2006, with Material costs increasing at the same rate as they did for 2004 to 2005, what would the Total cost of sales be in 2006?

11,255 11,633 12,641 12,862

Q29 For 2004 and 2005 combined, what was the average percent of Operating costs that was attributed to Marketing?

1.7% 2.9% 3.6% 5.1%

Q30 What was the cost of Salaries in 2005?

8,560 9,115 9,250 9,620

- **End of Free Practice Test 3** -

Visit www.AssessmentDay.co.uk for more aptitude tests.